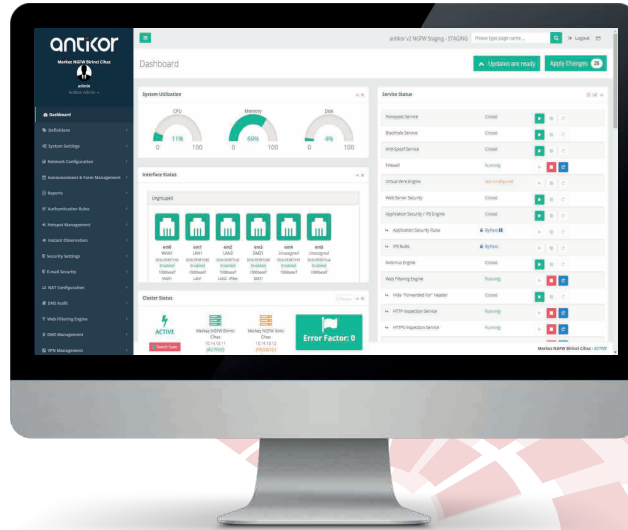


antikor^{v2}

Unified Cyber Security System

EPA-VFW-M150 Series Next Generation Firewall



COMMON CRITERIA
EAL 4+



TRtest

The Antikor Integrated Cyber Security System EPA-VFW-M150 Series Next-Generation Firewalls (NGFW) is a product that ensures the security of Micro SME networks with advanced security functions. It incorporates a Policy/Section Structure, Virtual Wire, Online and Offline Updates, IPsec VTI and TS Mode, HTTP API, and many other advanced features. It comes with all these features enabled out of the box and does not require a license.

Security



The Antikor NGFW product ensures the security of your network with advanced security functions. It provides maximum security through an Independent Management Port (reserved processor, separate Control Plane and Data Plane) and an Independent Cluster Port.

Network



The Antikor NGFW product provides high-performance solutions with rich network features ranging from Layer 2 to Layer 7. It ensures full compatibility with your network through configuration flexibility. It strengthens your network with its security functions, enhancing overall network security.

Performance



While executing security functions, it operates your network with maximum performance. Thanks to its robust network stack, it easily and efficiently meets the security and network needs of your enterprise network.

Management



You can centrally manage the Antikor NGFW products deployed in your organization through Centralized Firewall Management (CFWM). It allows you to gather logs from multiple logging devices and perform centralized logging (CLM), enabling you to query and analyze the collected logs from a single point.





Product Specifications

Operating Modes

- OSI Layer 2 Transparent
- OSI Layer 3 Routing + Stealth Mode
- Virtual Wire

Routing

- IPv4 / IPv6 Static Routing
- Policy Based Routing (PBR)
- OSPF - Open Shortest Path First Protocol
- BGP - Border Gateway Protocol
- RIP / RIPng - Routing Information Protocol
- PIM SM/SSM IGMP v2/v3 Multicast Routing
- Routing Monitor

Network Interface Specifications

- Loopback Interface, IEEE 802.1Q VLAN support
- Link Aggregation:
 - LACP, Failover, Load Balance, Round Robin
- Bridging / STP / Ethernet Bypass
- Virtual Extensible LAN (VXLAN)
- NAT64, IPv6 6to4 Tunneling
- Static ARP
- PPP ve PPPoE Connection Interface
- 3G/4G/LTE Modem Support

Security Specifications

- Zone Based Firewall
- Application Security (AppID)
- Honeypot Trapping
- Traffic Rate Limiting
- Multi-Policy, Section and Profile Support
- Time Based Security Policy Management
- IPS - Intrusion Detection and Prevention
- SPI - Statefull Packet Inspection
- DPI - Deep Packet Inspection
- http / https Web Filtering (SNI / DPI)
- DNS Query Filtering
- Intf. Base Anti Spoof(Symmetrical and Asymmetrical)
- MAC Based Quarantine
- MAC - IP Matching Control
- ARP Poisoning Protection
- Flood Intrusion Prevention
- Anti Botnet
- Gateway Anti Virus / Anti Malware ***
- SSH Inspection
- DoS Prevention - Connection Limiting
- XFF Scan - Trusted Proxy Servers
- Service Based Timeout Control

Email Security

- Gateway Antispam ***
- Anti Virus / Anti Malware ***
- Email Rate Limiting
- RBL, MX, SPF, DKIM, DMARC Check
- Email Quarantine
- Gray Listing, Phishing Check
- Category and Rule Based Filtering

VPN - Virtual Private Network

- SSL VPN
 - Certificate Verification
 - User Credentials Verification (+ 2FA)
 - Authentication:
 - BLAKE2*, RSA*, SHA*, MD*, SHAKE*
 - Encryption:
 - AES*, ARIA*, CAMELLIA*, SEED*, SM4*
- PPTP / L2TP VPN
- IPsec VPN (Both VTI and Legacy Mode)
- Site to Site VPN
- GRE Tunneling

IPsec VPN

- Encryption:
 - AES, CAMELIA, NULL_ENC, SERPENT, TWOFISH
- Authentication:
 - MD5, SHA1, SHA256, SHA384, SHA512, AES
- Wildcard ID Support
- NAT Traversal Support
- PKI - Public Key Infrastructure Support
- PSK - Pre Shared Key Support

Services

- Live Dashboard
- Automated Update System
- Offline Update
- Automatic Configuration Backup
- DHCPv4/v6 Server, Relay and Monitor
- Authenticated http/https Proxy
- Antikor® Shared Management-Virtual System
- QoS - Effective Bandwidth Management
- Time and Quota Adjustable Hotspot(Captive)
- Bandwidth Monitor
- Antikor® Registry Service
- Antikor® Announcement Service
- NetFlow Export Service
- RADIUS Server and Proxy
- Domain Based http/https Forwarding
- https SSL Offload Service
- SNMP v2/v3 Service
- RRD Service
 - Number of Active Users and Bandwidth
- http/https Caching
- Domain Based Bandwidth Limiting
- Log Timestamping
- TUBITAK Kamu SM - Timestamp Integration
- Syslog (TCP/UDP/TLS) - supported formats;
 - RAW, CEF, EWMM, GELF, JSON, WELF, CIM
- Black Hole Service
- Campus Information Service
- LLDP Service
- GEO-IP Service
- Antikor Central Management Integration and Antikor Center Logging Integration

System Performance M150

| | |
|-------------------------------|----------|
| NGFW Throughput (IMIX) | 150 Mbps |
| IPS Throughput (IMIX) *** | 200 Mbps |
| Firewall Throughput | 800 Mbps |
| Number of Concurrent Sessions | 150.000 |
| IPsec VPN Throughput (Total) | 100 Mbps |
| SSL VPN Throughput (Total) | 50 Mbps |

Licensing

| | |
|--------------------------------------|-----------|
| Out of Band Cluster(HA) Support | None |
| Number of Addressable CPU Threads | 4 |
| Number of IPsec VPN Tunnels | 6 |
| Number of SSL VPN Users | 20 |
| Number of WAN / LAN / DMZ Interfaces | 1 / 2 / 1 |

Management Interface Features

- HTML5 Responsive Web Interface
 - SSL Certificate based authentication
 - 2FA - Two-Factor Authentication
 - Customizing the Service Port
- Out of Band Management Plane
 - Resource Reservation
- SSH Console
- Physical Console (Monitor, Keyboard)
- Serial Console (If exists on hardware)
- Incident Notification Service
 - SMS, Email, Brower Notification

Authentication Methods

- Mernis
- SMS
- Local User
- HTTP (API)
- LDAP
- RADIUS
- POP3 / IMAP
- SSO: Negotiate Kerberos - Active Directory
- TACACS +

Product Certifications

- Common Criteria EAL4 +
- TRtest Product Conformity Certificate
- 100% Turkish Product

Minimum Requirements

- VMware ESXi, Hyper-V, Proxmox Hypervisor **
- At Least 4 Core AESNI Enabled CPU
- Min 8 GB Reserved RAM
- At Least 120 GB Storage (At Least 10000 IOPS with 4KB Blocks)
- MultiQueue Ethernet Card

* All performance values may vary depending on environmental conditions, system configuration and equipment.
 ** Ethernet Cards must be Configured as PassThrough, Hypervisor Virtual Ethernet Cards are not supported.
 *** These features require a minimum of 8 GB or more of memory.

